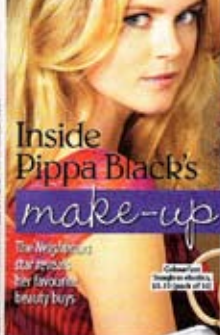




MEET A CELEBRITY



Inside Pippa Black's

make-up bag

The *Neighbours* star reveals her favourite beauty buys

↖ A regular, Pippa says she uses man-made leather bags whenever possible - which means no animals were harmed in the making of this retro-style PVC make-up bag

Spangol
bag, \$14.95



↖ "If I'm going out at night, I might take a little compact eye shadow in case I need a touch-up. I use neutrals, like taupe."

MAC Eye Shadow
in Kit, \$17



MAC Lashbrush in
Blackest Black, \$9



Colson's
Sapphire earrings,
\$5.95 each of 10

↖ I always have tummy pins and a hair tie with me because often I'm driving home from work. I take about 150 pins out of my hair and check them in my bag.



Lady Jane
hair ties
\$1.99 each of 10

1 Pippa plays with hairpins in *Neighbours*, *Neighbours*, & *20/20*, Network Ten

TV WEEK

As usual by you

↖ "At the moment I'm wearing MAC lights in Wandsworth. It's also the colour I wear on *Neighbours*. I don't do so much for myself but I suggested my character wear it on the show."



NEED TO KNOW Cosmeceuticals

1. WHAT THEY ARE
A cross between cosmetics and pharmaceuticals, cosmeceuticals are the latest buzzword in skin care, and usually contain ingredients like retinoids, alpha hydroxy acids, beta hydroxy acids and antioxidants (green tea, vitamins C and E).

2. HOW THEY WORK
As opposed to cosmetics, cosmeceuticals have a higher level of active ingredients than ordinary cosmetics, and claim to make more

drastic changes to the appearance of your skin.

3. BE AWARE There are currently no formal regulations governing cosmeceuticals, so before you buy do your research, and use only as directed.

4. TWO TO TRY Skin Doctors Janine Glycine Pump3, \$88.95 (30ml), which can help make skin appear firmer. Invisi-Vitamins C Serum, \$84 (30ml), an antioxidant that you apply before moisturising to brighten the skin.



Hopson's hot hints

When it's not busy creating hairless customers, David Hopson's brand *Shogun Hair Hopson* focuses on promoting Australian-made over-the-counter hair loss treatments. Here he tells us how he manages to keep his hair looking so good.

↖ When it's time to wash your hair, use shampoo that's gentle on the scalp, so the hair doesn't become brittle and break.

↖ "My skin does well quickly in the summer, so the advice is to use a light moisturiser. I use *Shogun Hair Hopson's* Moisturiser 1000. It's great at the end of a long day."

↖ "I prefer to use a light moisturiser. I use *Shogun Hair Hopson's* Moisturiser 1000. It's great at the end of a long day."

↖ "I prefer to use a light moisturiser. I use *Shogun Hair Hopson's* Moisturiser 1000. It's great at the end of a long day."

↖ "I prefer to use a light moisturiser. I use *Shogun Hair Hopson's* Moisturiser 1000. It's great at the end of a long day."